

# NDC and Billion Trees National Movement in Mongolia

A. Tseepil Ph.D

Forest sector consultant NDC3.0 in GIZ

2025.06.23



# CONTENTS



Climate change in Mongolia



Current Status of the Forestry Sector



GHG emissions and GHG removals in the forestry sector



NDC 3.0 Target updates (Draft)

# Climate change in MONGOLIA



# CLIMATE CHANGE

1940-2021:

Air temperature **2.5°C** ↑

Total annual  
precipitation

**7.3%** ↓

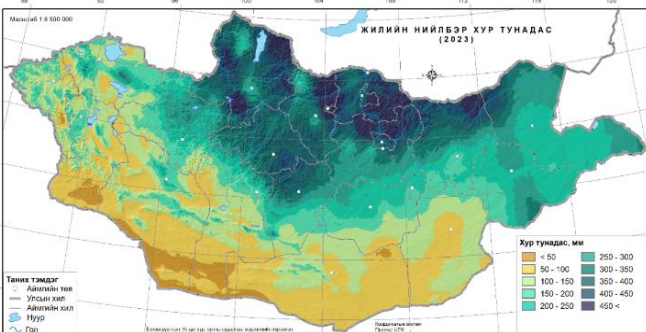
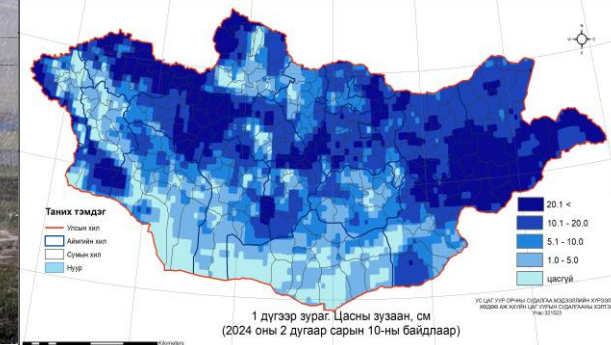
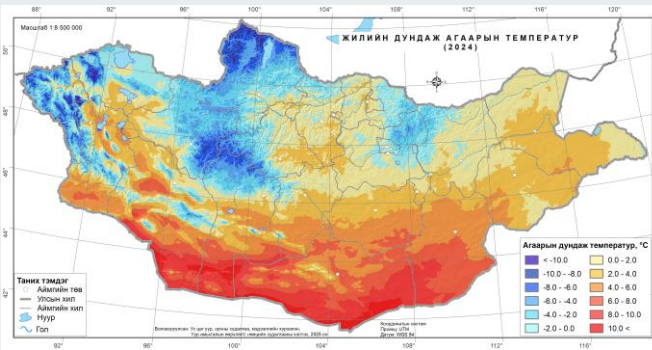
2023 Amount of  
precipitation 251.2 mm

MAX 558.9 mm  
MIN 36.4 mm

Meteorology-  
related disasters

**2** ↑

Snow depth increases: MAX 60 см  
MIN 1-5 см



Source: IRIMHE

# WATER RESOURCE



Water resource: **564.8 km<sup>3</sup>**



Surface water: **98%**

Surface water (2021):

Rivers	Springs	Lakes	Spa
6356	13222	6356	584
Drained			
116	381	180	5

**89%**

Lake 500.0 km<sup>3</sup>

**6%**

River 34.6 km<sup>3</sup>

**3%**

Glaciers 19.4 km<sup>3</sup>

**2%**

Underground  
water 10.8 km<sup>3</sup>





# DESERTIFICATION AND LAND DEGRADATION

**76.9%**

**Factors contributing to degradation**

- Climate change
- Dryness
- Drought, floods, strong winds, storms, sand drifts
- Earthquake



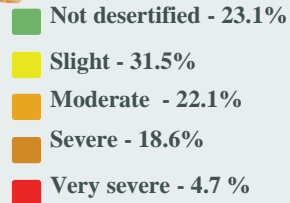
**51%**

**49%**

**Natural factors:**

**Human factors:**

- Animal husbandry
- Farming
- Mining
- Urbanization-infrastructure



A total of **120.3** million hectares were desertified.



# **AFFORESTATION AND REFORESTATION**

**(Forest sector)**



The background features a stylized landscape with rolling green hills. In the distance, four orange wind turbines are visible. Several dark green trees of different shapes are scattered across the hills. A large dark grey rock sits in the bottom right corner. The sky is light blue with a few white clouds.

# FOREST RESOURCE



Forest covered  
area: **8.45%**



Forest fund: **19,103.2** thousand ha

**Boreal forest: 74.6%**

**Saxaul forest: 25.3%**





# FOREST RESOURCE

**Siberian Larch**  
**79.3%**

**Cedar**  
**8.9%**

**Birch**  
**6.0%**

**Siberian pine**  
**5.0%**

**Spruce**  
**0.2%**

**Siberian fir**  
**0.01%**

**Aspen**  
**0.17%**

**Poplar**  
**0.05%**

**Willow**  
**0.3%**

**Elm**  
**0.01%**

**Saxaul, poplar**  
**0.14%**



# FOREST DEGRADATION



## FOREST DEGRADATION:

- Forest fire
- Forest pests
- Illegal logging



# “BILLION TREES” NATIONAL MOVEMENT (2021-2030)



Result	Target level				
	Baseline level	2024	2025	2030	2050
Forest covered area%	7.9% (2019)	<b>8.6%</b>	<b>8.7%</b>	<b>9.0%</b>	<b>10.5%</b>



# GOOD PRACTICE – AFFORESTATION/REFORESTATION

## “Billion Trees” national movement

2024 year  
107,4 million  
planted trees

### BOREAL FOREST AREA

Selenge province,  
Altanbulag soum



### STEPPE AREA

Tuv province,  
Bayantsogt soum



### GOBI AREA

Umnugovi province,  
Bayandalai soum



# NDC 3.0 TARGETS





# Measures to reduce GHG emissions and increase GHG removals in the forestry sector

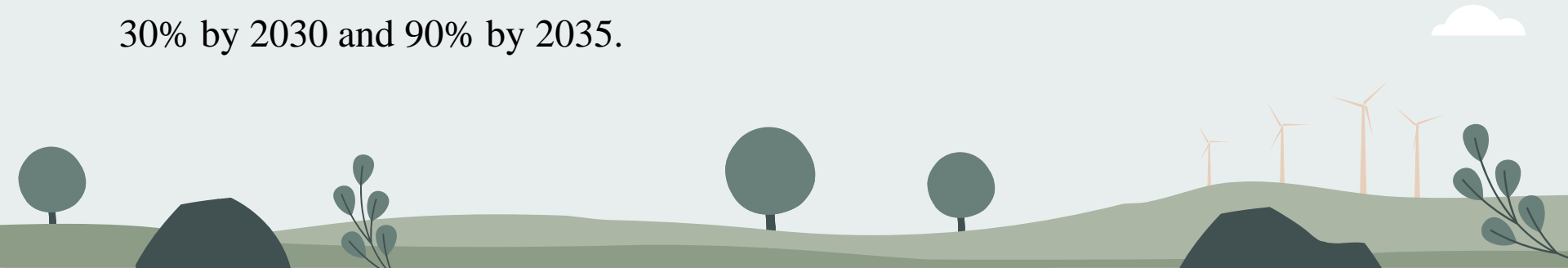
---

## **1. Enhancing afforestation, reforestation, and ecological restoration efforts.**

- By promoting natural regeneration, reforestation, and increasing forest cover, the forest area is projected to grow to 9% by 2030 and 9.1% by 2035.

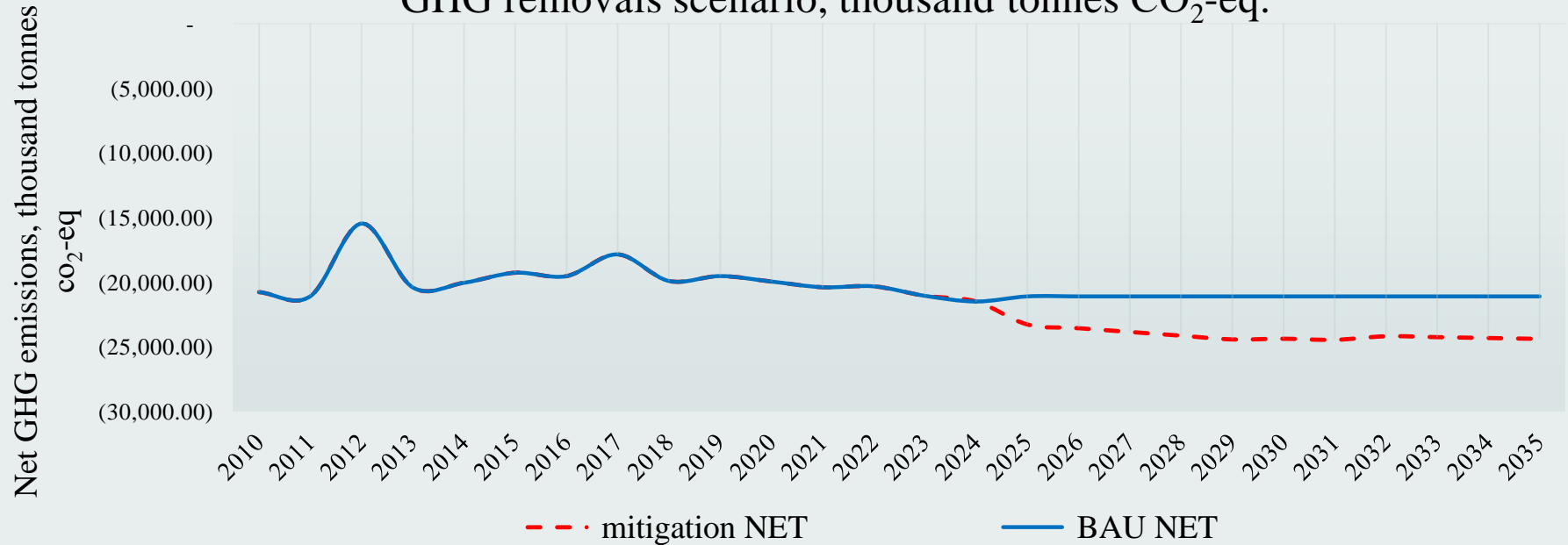
## **2. Reducing forest degradation**

- Enhance forest fire prevention measures to limit the average area affected by fires to 30% by 2030 and 90% by 2035.



# NDC 3.0 TARGET (Draft)

Comparison of baseline scenario and enhancement of GHG removals scenario, thousand tonnes CO<sub>2</sub>-eq.



## TARGETS FOR REDUCING DEFORESTATION AND FOREST DEGRADATION AND INCREASING FOREST PRODUCTIVITY /thousands of tons of CO<sub>2</sub>-eq./

	2010	2015	2020	2025	2030	2035
Baseline scenario	-20775.70	-19275.67	-19956.93	-21106.16	<b>-21106.16</b>	<b>-21106.16</b>
Removals enhancement scenario (unconditional)	-20775.70	-19275.67	-19956.93	-23274.78	<b>-24378.79</b>	<b>-24391.37</b>
<b>Increase in Forest removals</b>	-	-	-	-	<b>-3272.64</b>	<b>-3285.21</b>
Conserved removals through reducing forest degradation.	-	-	-	-	-332.35	-427.30
Growth-related removals are preserved through focused afforestation efforts and natural regeneration.	-	-	-	-	-2940.29	-2857.91
<b>Increase in Forest removals, %</b>	-	-	-	-	<b>15.5%</b>	<b>15.6%</b>

*Thank you for  
attention*

