



MINISTRY OF ENVIRONMENT
AND TOURISM



Co-funded by the
European Union



STREAM – Lessons Learned

Forestry Sector

Zoljargal Sainbuyan

Forest policy and management
expert (STREAM+)

Implemented by



PROJECT REGION



Co-financed by	European Union: 4,150,000€ under the Global Climate Change Alliance plus/Development Smart Innovation through Research in Agriculture (GCCA+/DeSIRA)
	German Federal Ministry for Economic Cooperation and Development (BMZ): 400,000€
Co-implemented by	Deutsche Gesellschaft für Internationale Zusammenarbeit (GIZ) GmbH
	Food and Agriculture Organization of the United Nations (FAO)
Project region	Selenge aimag (Yeruu, Mandal, Javkhlant soums)
	Khentii aimag (Binder, Bayan-Adarga, Umnudelger soums)
Duration	2021 – 2024

PROJECT REGION



OBJECTIVE:

The project aims to increase capacity of Mongolian communities to implement innovative and sustainable long-term landscape management to address food system challenges and climate stresses. The project has two components.

- I. Mainstreaming climate change adaptation into the agricultural landscape management to increase agricultural productivity, sustainability, and value addition (with the support of the agricultural component);
- II. Improving capacity for sustainable landscape management of forest resources and conservation of biodiversity in target soums (with the support of the forestry component).



MINISTRY OF ENVIRONMENT
AND TOURISM



Co-funded by the
European Union



From Exploitation of Forests to Sustainable Forest Management





MINISTRY OF ENVIRONMENT
AND TOURISM



Co-funded by the
European Union



Awareness Raising & Training



Forestry Legislation and Policies





MINISTRY OF ENVIRONMENT
AND TOURISM



Co-funded by the
European Union



KEEP LIVESTOCK OUT OF REGENERATING FORESTS





MINISTRY OF ENVIRONMENT
AND TOURISM



Co-funded by the
European Union



IMPROVED ECONOMY IS THE KEY

Efficient and Increased Timber Production

Development of Forest Industry

Job Opportunities and related Education and Training



Implemented by



PEOPLE ARE THE OTHER KEY

Inclusion of representatives from Local Communities, Private Companies, Organisations and the Government at all levels is essential for successful change!



More than 80 demonstration plots were established in the project's six target soums to showcase best practices in Sustainable Forest Management (SFM) in collaboration with a University Consortium led by the Mendel University in Brno, Czech Republic.

- A tree nursery was established in Javkhlant soum, Selenge aimag to serve as a source of seedlings and saplings and to enable local beneficiaries to attend practical tree planting training.
- 300 forest technicians of Inter-Soum Forest Units, Forest User Groups, and professional forest organizations were capacitated through SFM trainings on seven different topics.
- Potential value chains of timber and non-timber forest products were assessed in the project target aimags. In addition, policy briefs for the forestry sector of Mongolia were developed.

- The development of a research paper compendium "DONSATI" on technology and innovation to restore, protect and use degraded forests was supported and disseminated to target audience.
- The "One Billion Tree" National Movement of the Government of Mongolia was supported through tree planting training of trainers and the development of tree planting guidelines and handbooks.
- Awareness raising events (e.g. *Advocating International Day of Forests, SFM practices, and School Day in Forest*) were organized for youth to highlight the importance of forests, especially their role in climate change adaptation and mitigation.
- An upscaling of forest thinning of 160 hectares is being supported in pilot areas.

Sustainable Ecosystem and Agriculture Management for Rural Development in Mongolia STREAM+

General Introduction



Co-funded by the
European Union



Implemented by



Food and Agriculture
Organization of the
United Nations

STREAM

Implemented by



Food and Agriculture
Organization of the
United Nations

Overall Objective is contribute to strengthening Mongolia's green and digital transition efforts for the inclusive and sustainable development of the country



The Specific Objectives 1. Improved regulatory and/or policy framework to enable sustainable, climate-sensitive and gender inclusive management of forests and agriculture areas, and a fit-for-purpose TVET sector



The Specific Objectives 2. Adopted integrated landscape management with focus on agriculture (agriculture encompasses livestock and crop production for food and non-food products) and forestry addressing food system challenges and climate change



The Specific Objectives 3. Developed and strengthened selected sustainable and climate-resilient agriculture and forestry value chains



The Specific Objectives 4. Enhanced capacities of TVET to meet labour market needs in close partnership with the private sector in agriculture and forestry, ensuring an increase of women and girls' participation



Implementing Organizations



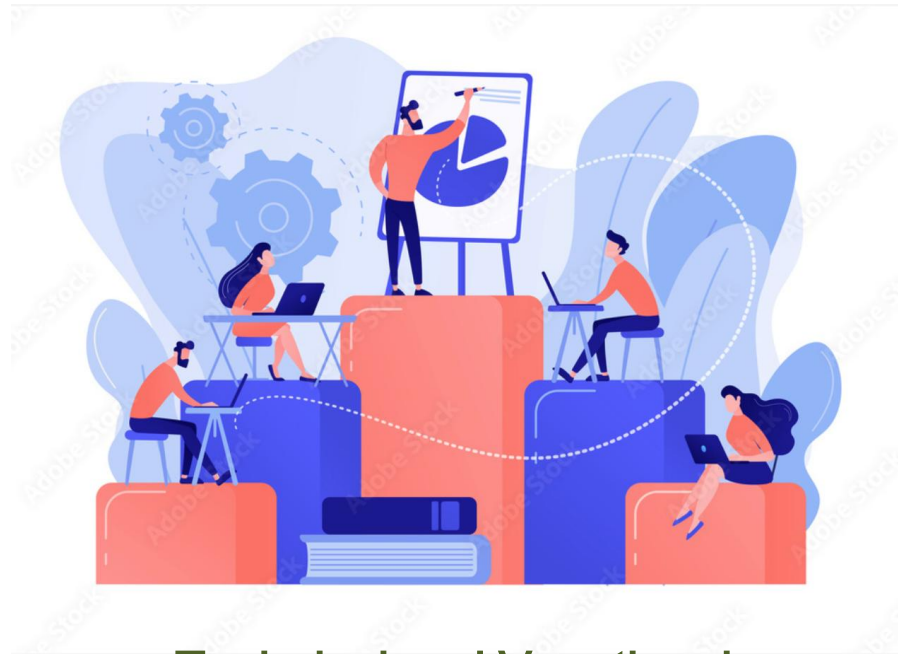
Co-funded by the
European Union



THE ORGANIZATION



Forestry component



Technical and Vocational Education and Training

THE PARTNER



Food and Agriculture
Organization of the
United Nations



Agriculture component

Implemented by



Food and Agriculture
Organization of the
United Nations



MINISTRY OF ENVIRONMENT
AND TOURISM



Co-funded by the
European Union



Participating Agencies:

- **Executing agency:** Ministry of Environment and Climate Change (MECC)

Main Stakeholders:

Agriculture & Land

- MoFALI and selected subordinate departments
- Agency for the Land Administration and Management, Geodesy and Cartography
- **Aimag Government & Departments**
- MULLS, School of Agroecology

Forestry

- MECC and selected subordinate departments
- Government Implementing Forest Agency
- Aimag Government & Departments (Forest divisions)
- Inter-/soum Forest Units
- Research Organization

TVET

- Ministry of Education
- General Authority for Education
- Mongolian National Chamber of Commerce and Industry

OTHER ENTITIES:

Private sector:

- Employers' association
- Trade Unions
- Euro Chamber
- Forest Enterprises
- Producers

Civil society:

- Community-based organisations
- NGO
- Cooperatives

STREAM+

SO1

Improved regulatory and/or policy framework

Output 1.1

Sustainable and climate-sensitive landscape management approaches included in new policies, and relevant institutions are strengthened.

Output 1.2

Improved policy framework and institutional capacities to drive the organizational reform of TVET towards an efficient, sustainable and labour market-driven sector, with gender mainstreaming

SO2

Integrated landscape management with focus on agriculture and forestry

Output 2.1

Sustainable and climate-sensitive landscape management approaches included in new policies, and relevant institutions are strengthened.

SO3

Sustainable and climate-resilient agriculture and forestry value chains

Output 3.1

Green and digital technologies integrated in the value chains of selected forest- and agriculture products .

Output 3.2

Agroforestry models with potential to contribute to sustainable land use, climate resilience, food security and improved livelihoods for rural communities established.

SO4

Enhanced capacities of TVET

Output 4.1

Improved relevance, quality and delivery of TVET system in agriculture- and forestry sectors, increasing women and girls' participation

STREAM+

SO1

Improved regulatory and/or policy framework

Output 1.1

Sustainable and climate-sensitive landscape management approaches included in new policies, and relevant institutions are strengthened.

Output 1.2

Improved policy framework and institutional capacities to drive the organizational reform of TVET towards an efficient, sustainable and labour market-driven sector, with gender mainstreaming

SO2

Integrated landscape management with focus on agriculture and forestry

Output 2.1

Sustainable and climate-sensitive landscape management approaches included in new policies, and relevant institutions are strengthened.

SO3

Sustainable and climate-resilient agriculture and forestry value chains

Output 3.1

Green and digital technologies integrated in the value chains of selected forest- and agriculture products .

Output 3.2

Agroforestry models with potential to contribute to sustainable land use, climate resilience, food security and improved livelihoods for rural communities established.

SO4

Enhanced capacities of TVET

Output 4.1

Improved relevance, quality and delivery of TVET system in agriculture- and forestry sectors, increasing women and girls' participation

Project sites

Khuvsgul aimag

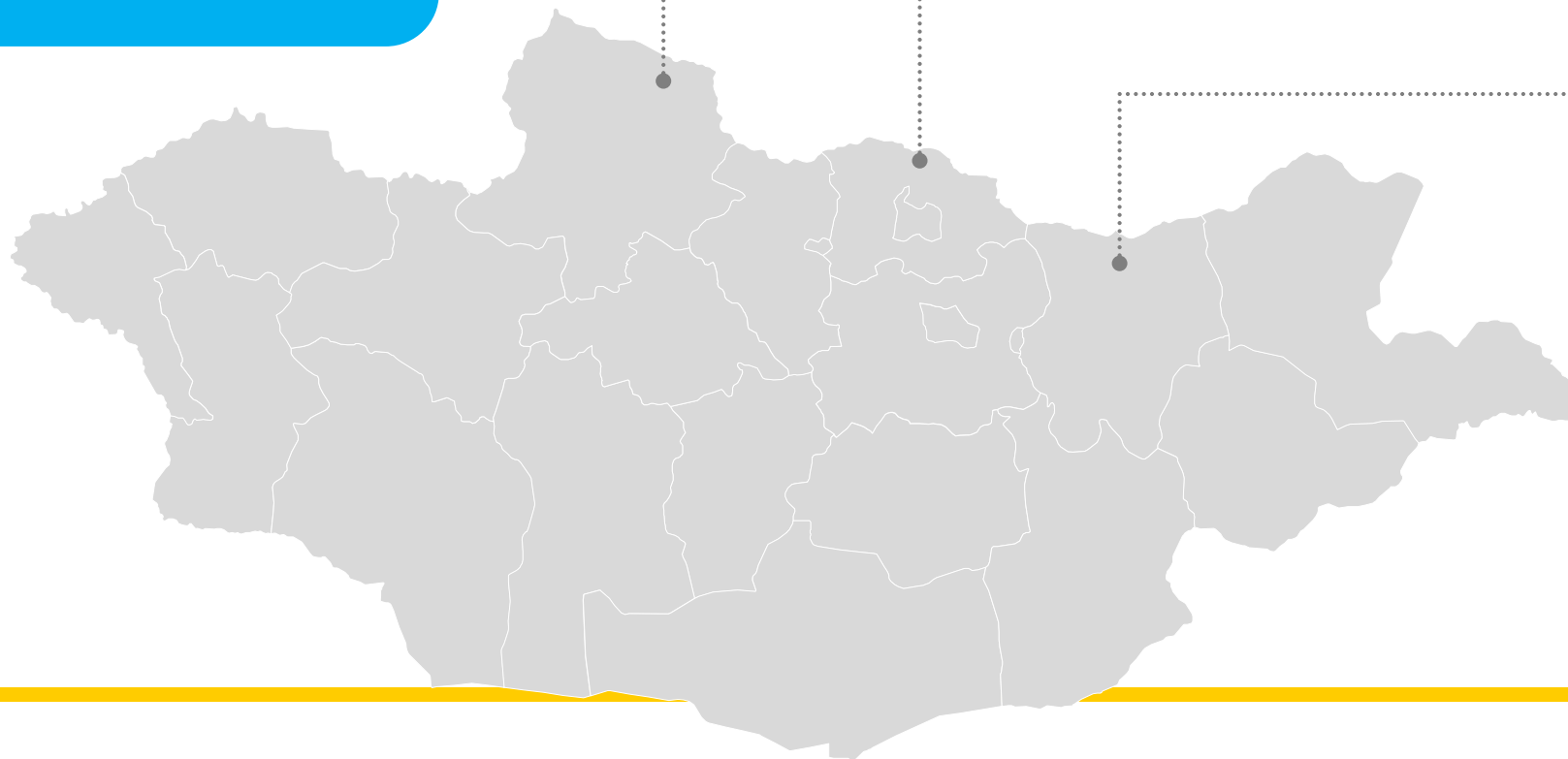
- Jargalant
- Galt

Selenge aimag

- Javkhlant
- Mandal
- Yeruu
- **Khuder**

Khentii aimag

- Binder
- Umnudelger
- Bayan Adarga
- **Batshireet**

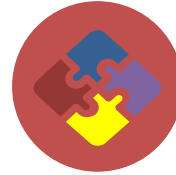


Main Activities



Policy

- Law on Forest
- Land Laws (pasture management)
- Law on Trade and GI
- Livestock Tax Law
- Legal framework for Agroforestry (Law on Forest and Law on Crop)



Landscape management

- National strategy on SFM
- Forest Management Plan
- Land management plan (Khuvsgul aimag and 4 soums)
- Pasture management practices



Value chains

- Forest value chains (birch charcoal, wood from forest management)
- Meat and cashmere (artificial insemination)
- Agroecology
- Agroforestry



MINISTRY OF ENVIRONMENT
AND TOURISM



Co-funded by the
European Union



Thank you for you attention!



"Cut & Care"

