

# AFoCO RETC Towards a Greener Asia!

## Facilities of RETC

### 01 Education and Training



\* Lecture rooms, Conference hall, Meeting rooms, Laboratories, Multimedia room, Dining hall

### 02 Accommodation



\* Dormitory for 28 trainees

### 03 Public and Support



\* Resting lounge and Lobby

## Panoramic View of RETC

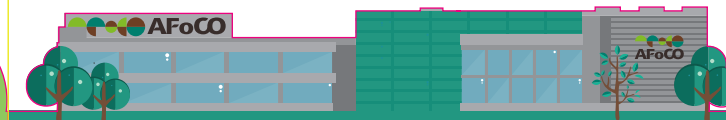


\* Land Area 28,419m<sup>2</sup>, Floor Area 5,014m<sup>2</sup>

## Location of RETC



\* 43km from the Yangon International Airport



# Regional Education and Training Center

Asian Forest Cooperation Organization

## Introduction to AFoCO

### Asian Forest Cooperation Organization (AFoCO) Towards a Greener Asia!

AFoCO, the first international organization in the forestry sector in Asia, is established to provide cooperative responses to address reforestation and climate change.

AFoCO shares experiences and technologies learned from the successful reforestation programs of Korea and performs projects to contribute to:

- Strengthening the role of forestry sector to respond to climate change
- Rehabilitating degraded forest ecosystems and preventing desertification and forest disasters
- Encouraging the sustainable use, management and conservation of forests
- Enhancing capacity building, technology transfer and research & development in the forestry sector

AFoCO is an action-oriented regional organization that leads activities for the restoration of devastated forests and forest conservation to realize the goal of a green Asia by tapping the economic growth potential and rich ecological resources of the region. It is recognized that the sustainable use and management of forest resources helps provide solutions to global environmental problems and is fundamental to the sustainable development of developing countries in Asia. The organization is making efforts in cooperation with its member countries to restore and conserve forest ecosystems in the region. AFoCO pursues win-win strategies with all member countries and plans to expand its membership to all countries in Asia including those in Northeast and Central Asia as well as Southeast Asia. Through this expansion, AFoCO will become a leading global forestry organization in Asia and contribute to sustainable forest management in developing countries, improving the livelihoods of forest-dependent communities and addressing the impacts of climate change.

## Introduction to RETC

The Regional Education and Training Center (RETC) of AFoCO aims to strengthen the capacity of the forestry sector in member countries through advanced training and education programs. The RETC was built on a total area of 28,419m<sup>2</sup> with a total floor area of 5,014m<sup>2</sup> in Hmawbi Township, Yangon, Myanmar and is equipped with modern training facilities including lecture rooms, laboratories, multimedia rooms, an auditorium, a dormitory and other support facilities for the convenience of the trainees.

The RETC aims to:

- Educate and foster exemplary leaders who will carry out AFoCO's mission to realize a greener Asia
- Provide practical and problem solving-oriented education programs to train government officials and experts in the field of forestry to practise and promote sustainable forest management
- Improve the quality of life and livelihoods of forest communities and promote mutual communication

The RETC will function as the regional base for international cooperation in the forestry sector by providing capacity building programs and activities specialized in the development of professionals who will be responsible for improving livelihoods through sustainable forest management in the member countries of AFoCO.

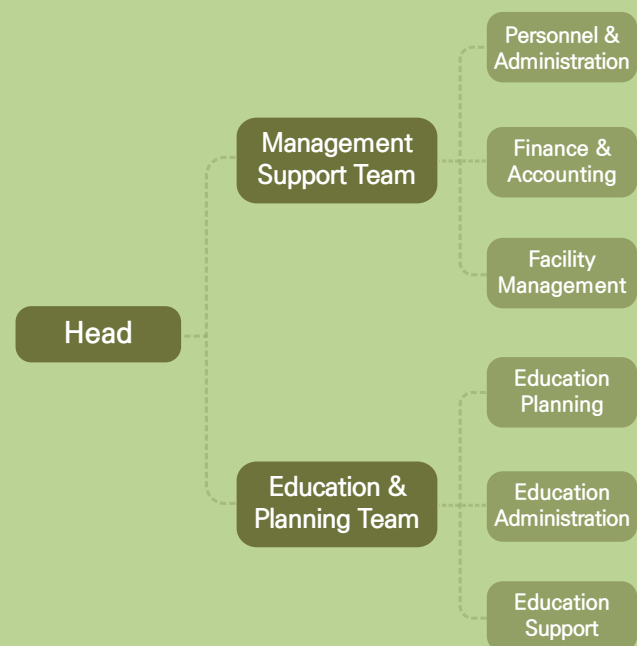
The RETC will be a leading global institute in the international forestry sector for capacity building by improving research capabilities and management practices through scientific approaches to address forestry issues in each member country.



## Organization of RETC

The AFoCO RETC is composed of the Head, the Management Support Team and the Education & Planning Team. The Head is responsible for the general center operation. The Management Support Team handles human resource management, budget-related matters and facilities management while the Education & Planning Team coordinates the planning and operation of training programs. The staff consist of officials from the Forest Department of Myanmar and staff from the AFoCO Secretariat.

### Organization Chart



## Programs of RETC

The AFoCO RETC offers education and training programs to share knowledge and to train and foster exemplary leaders who are capable of carrying out good governance for a Greener Asia.

The problem-oriented education and training programs of RETC will enable participants to contribute towards the integration of Asia by narrowing the development gap while promoting sustainable forest management. RETC programs will also cover methods to improve local livelihoods.

RETC provides regular programs on forestry topics within the scope of AFoCO's mission and strategies. Three core training topics provided by the RETC are:

1. Forest Rehabilitation and Reforestation
2. Forest Fire Management
3. Community-based Forest Management

RETC also cooperates with international organizations, governments, universities, and research institutes to organize and implement various forestry-related education programs.

The training and education programs are categorized into 1)short-term training, 2)long-term training, 3)community development training, and 4)customized training.

Short-term	Long-term	Community Development	Customized
1 ~ 2 weeks	2 weeks ~ 6 months	Short-term	Short-term Long-term
4-10 times a year	2-4 times a year	Frequent openings	Frequent openings
Gov. officials (policy makers & technical experts)	Gov. officials and researchers	Local officials and communities in the region	Gov.officials, experts, students, etc.