



Regional  
Education and  
Training  
Center



Regional  
Education and  
Training  
Center

  
**AFOCO**



# Contents

## AFoCO

- 01 Introduction
- 02 Purpose and Vision
- 03 History

## AFoCO

Regional Education  
and Training Center

- 01 Introduction
- 02 Purpose and Vision
- 03 History
- 04 Program
- 05 Facility Information Map
- 06 Facility Details
- 07 Organization
- 08 Location
- 09 Partner Institutions

## Supplement

- 01 Design Concept
- 02 Establishment Process

# AFoCO

Asian Forest Cooperation Organization

# 01

## AFoCO Introduction

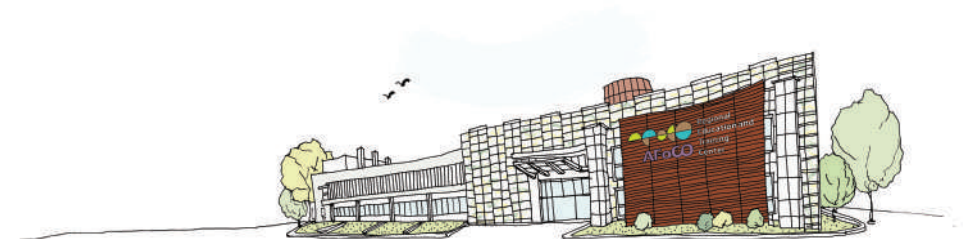
### Asian Forest Cooperation Organization (AFoCO) towards a Greener Asia!

AFoCO is the first international organization in the forestry sector in Asia established to provide cooperative responses to address reforestation and climate change.

AFoCO shares experiences and technologies learned from successful reforestation programs of Korea and performs projects to contribute to:

1. Strengthening the role of forestry sector to respond to climate change
2. Rehabilitating degraded forest ecosystems and preventing desertification and forest disasters
3. Encouraging sustainable use, management and conservation of forests
4. Enhancing capacity development, technology transfer and research & development in the forestry sector

AFoCO is an action-oriented regional organization that leads activities for restoration of devastated forest and forest conservation to realize the goal of a green Asia based on the economic growth potential and the rich ecological resources in the region. It is recognized that the sustainable use and management of forest resources helps provide solutions to global environmental problems and is fundamental to the sustainable development of developing countries in Asia. The organization is making efforts in cooperation with its member countries to restore and conserve forest ecosystems in the region. AFoCO pursues win-win strategies with all member countries and plans to expand the membership to the all Asian region including Northeast and Central Asia as well as Southeast Asia. Through this expansion, AFoCO will become a leading global forestry organization in Asia and contribute to sustainable forest management in developing countries, improving the livelihood of forest-dependent communities and addressing the impact of climate change.

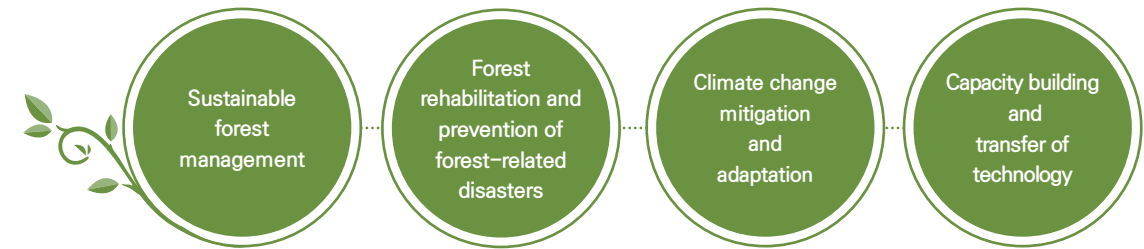


# 02 <sup>AFoCO</sup> Purpose and Vision

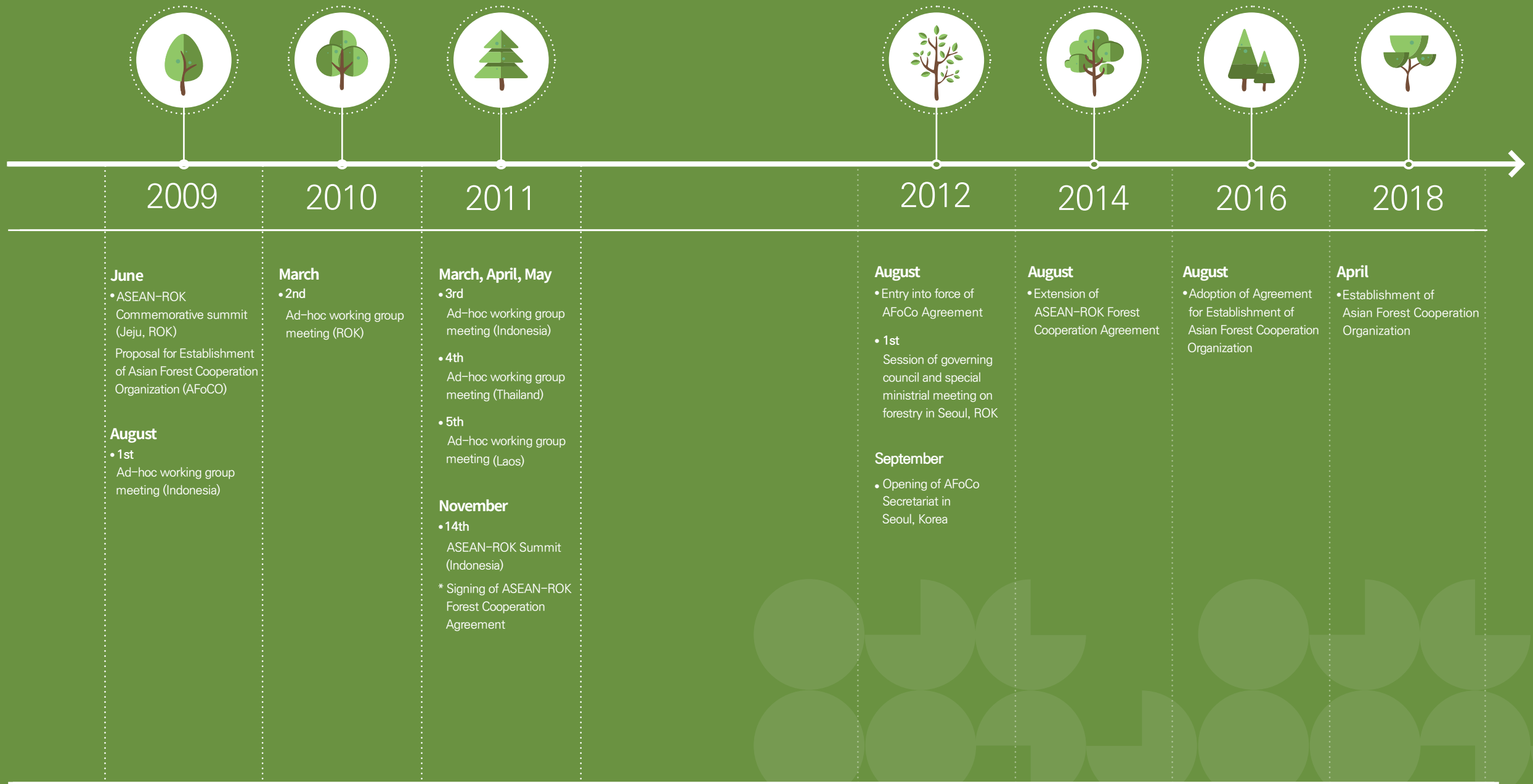
## Respond to climate change and promote sustainable forest management

AFoCO is committed to strengthening regional forest cooperation, project implementation, forest policies and technologies for the rehabilitation of degraded forests and the prevention of forest denudation in order to adapt and respond to climate change and promote sustainable forest management.

## Scope of Cooperation



# 03 AFoCO



# AFoCO

## Regional Education and Training Center

# 01

## AFoCO RETC Introduction

The Regional Education and Training Center (RETC) of AFoCO aims to strengthen the capacity building of the member countries in forestry sector through advanced training and education programs. The RETC was built on a total area of 28,419.1 m<sup>2</sup> with a total floor area of 5,014.4 m<sup>2</sup> in Hmawbi Township, Yangon, Myanmar and is composed of modern training facilities including lecture room, laboratory, multimedia room, auditorium, and dormitory with other supporting facilities for the convenience of the trainees.

The Aim of RETC:

1. Strive to educate and foster exemplary leaders who will carry out AFoCO's mission to actualize a greener Asia.
2. Provide action and problem solving-oriented education programs with the aim to train government officials and experts in the field of forestry who will realize sustainable forest management.
3. Improve the quality of life, forest related livelihood, and mutual communication.

The RETC will function as the regional base for international cooperation in the forestry sector by providing capacity building programs and activities specialized in the development of professionals who will be responsible for improving the livelihood through sustainable forest management in each member country of the AFoCO.

The RETC will be a leading global institute in the international forestry sector for capacity building by improving academic research capabilities and management practices through scientific approaches to address forestry issues in each member country.



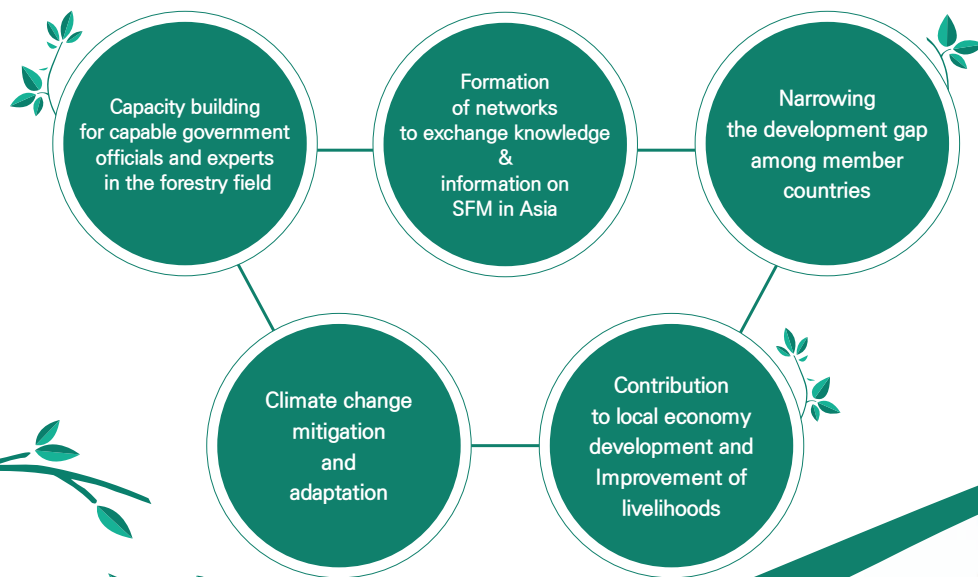
# 02 AFoCO RETC Purpose and Vision

## Vision

**Emerge as a world-recognized the international forest Training center  
Train leaders to ensure good governance for a greener Asia**

- ① Cultivate capable government officials and experts in the forestry field of each member country
- ② Promote the sharing of knowledge and experiences

## Mission



## The Future

### Short Term | Leaping Period 2017~2019

- Know-how transference on training from research institutions and local forest training centers in the member countries
- Capacity development for AFoCO RETC
- Development of training modules
- Utilization of manpower from the Forest Department in Myanmar

⋮

### Intermediate Term | Development Period 2020~2022

- Operation and capacity reinforcement of the AFoCO RETC
- Building know-how on education and training
- Utilization of manpower from the Forest Department in Myanmar

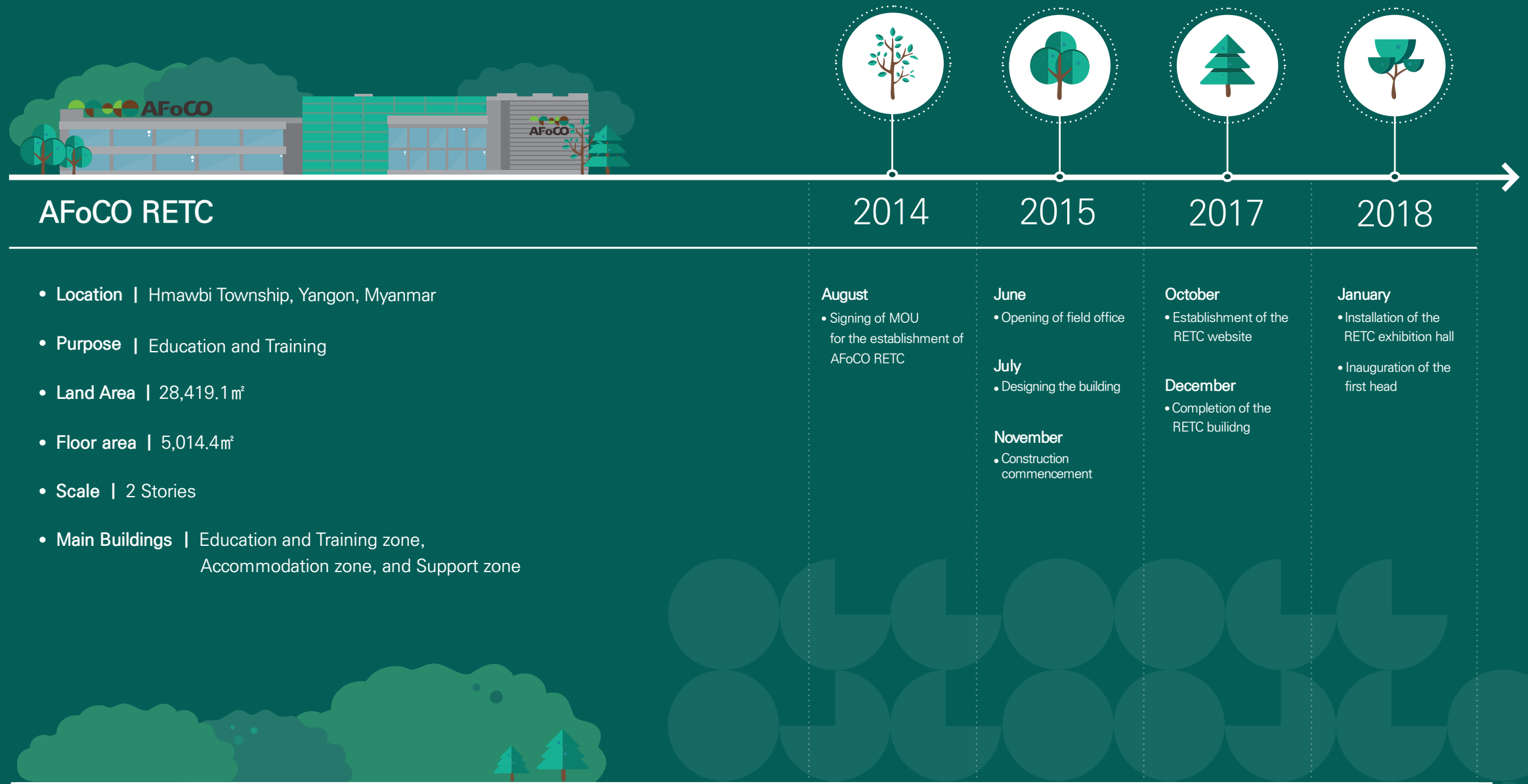
⋮

### Long Term | Stability Period 2023~

- Emerging as the worldwide forest education and training center
- Utilization of the AFoCO RETC as a base for AFoCO's prestige enhancement and cooperation



# 03 AFoCO RETC History



# 04 AFoCO RETC Program

The AFoCO RETC offers optimal education and training programs, in order to share knowledge, train and foster exemplary leaders who are capable of carrying out good governance for a Greener Asia.

The problem-oriented education and training programs of RETC will enable participants to contribute towards integration of Asia by narrowing the development gap while promoting sustainable forest management. RETC programs will also cover methods to improve local livelihood.

RETC provides regular programs on topics in forestry within the scope of AFoCO's mission and strategies including three core training topics.

- 1. Forest rehabilitation and reforestation
- 2. Forest fire management
- 3. Community based forest management

RETC also cooperates to organize and implement various joint education programs in forestry with international organizations, governments, universities, research institutes and others.

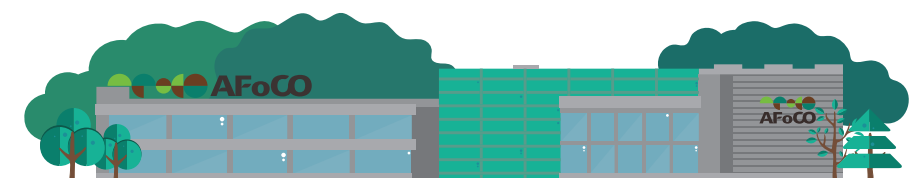


1,2 Lecture room 3 Lecture room

## Outline of RETC education and training programs

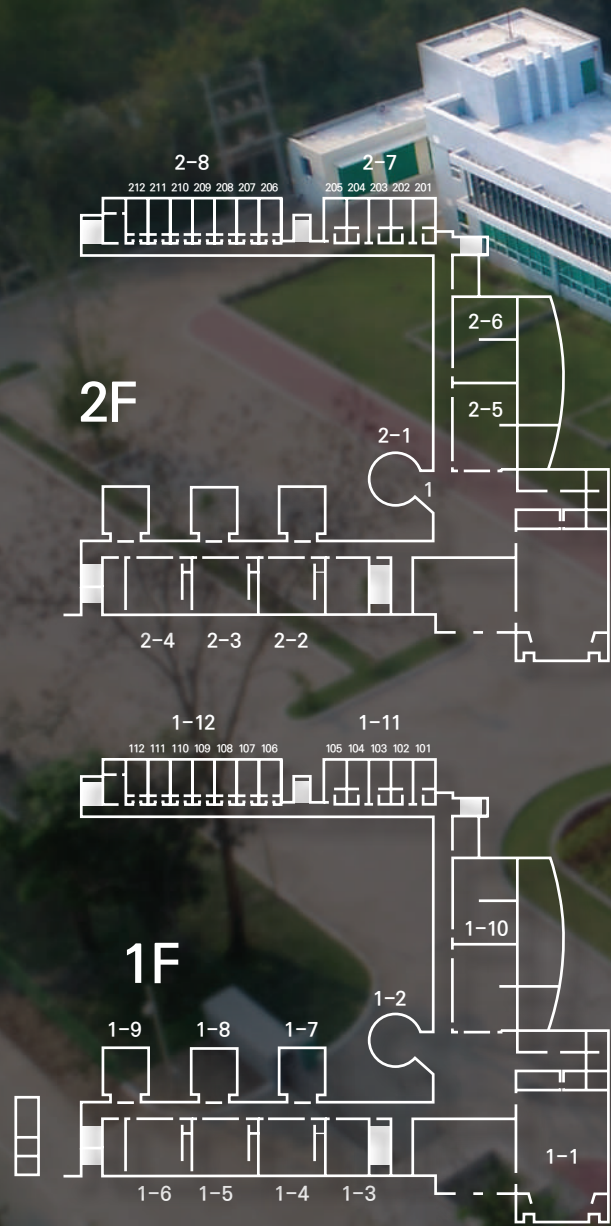
The training and education programs are categorized into 1) short-term training, 2) long-term training, 3) community development training, and 4) customized training.

Division	Short-term	Long-term	Community Development	Customized
Duration	1 ~ 2 weeks	2 weeks ~ 6 months	Short-term	Short-term Long-term
Frequency	4 - 10 times a year	2 - 4 times a year	Frequent openings	Frequent openings
Target Participants	Gov. officials (policy makers & technical experts)	Gov. officials and researchers	Local officials and communities in the region	Gov. officials, experts, students, etc.
Learning Objectives	1. Enhance the abilities of gov. officials in managing forests sustainably through acquiring higher education and advanced technology  2. Exchange knowledge and experiences and build networks among the member countries in forestry	1. Learn and adopt advanced technology and new management systems in forestry in RETC or respective countries  2. Narrow the development gap among the member countries	1. Provide forest-related activities and programs to improve local people's understanding of forests and their roles  2. Promote AFoCO and RETC and their activities	1. Provide education and training programs in line with objectives of AFoCO



# 05

AFoCO RETC  
Facility Information Map



## 1F

- 1-1 Conference Hall
- 1-2 Exhibition Hall
- 1-3 Administrative Office
- 1-4 Lecture Room 1
- 1-5 Lecture Room 2
- 1-6 Lecture Room 3
- 1-7 Head Office
- 1-8 Meeting Room 1
- 1-9 Meeting Room 2
- 1-10 Dining Hall
- 1-11 Lecturer's Residence
- 1-12 Trainees' Dormitory

## 2F

- 2-1 Exhibition Hall
- 2-2 Multimedia Room
- 2-3 Laboratory Room 1
- 2-4 Laboratory Room 2
- 2-5 Fitness Room
- 2-6 Resting lounge
- 2-7 Lecturer's Residence
- 2-8 Trainees' Dormitory

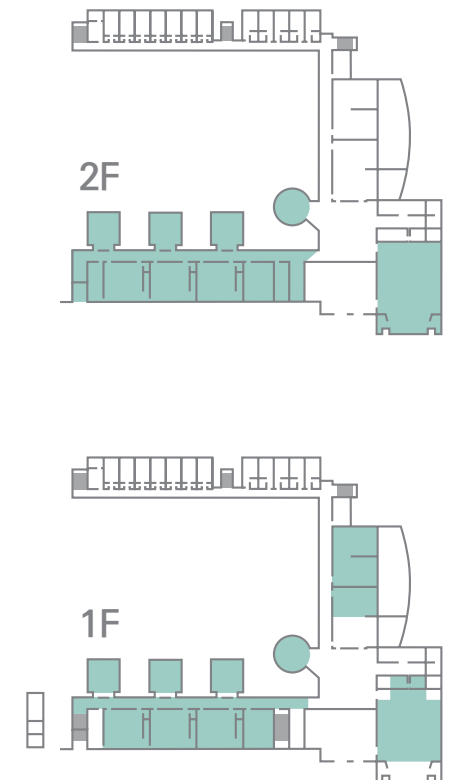
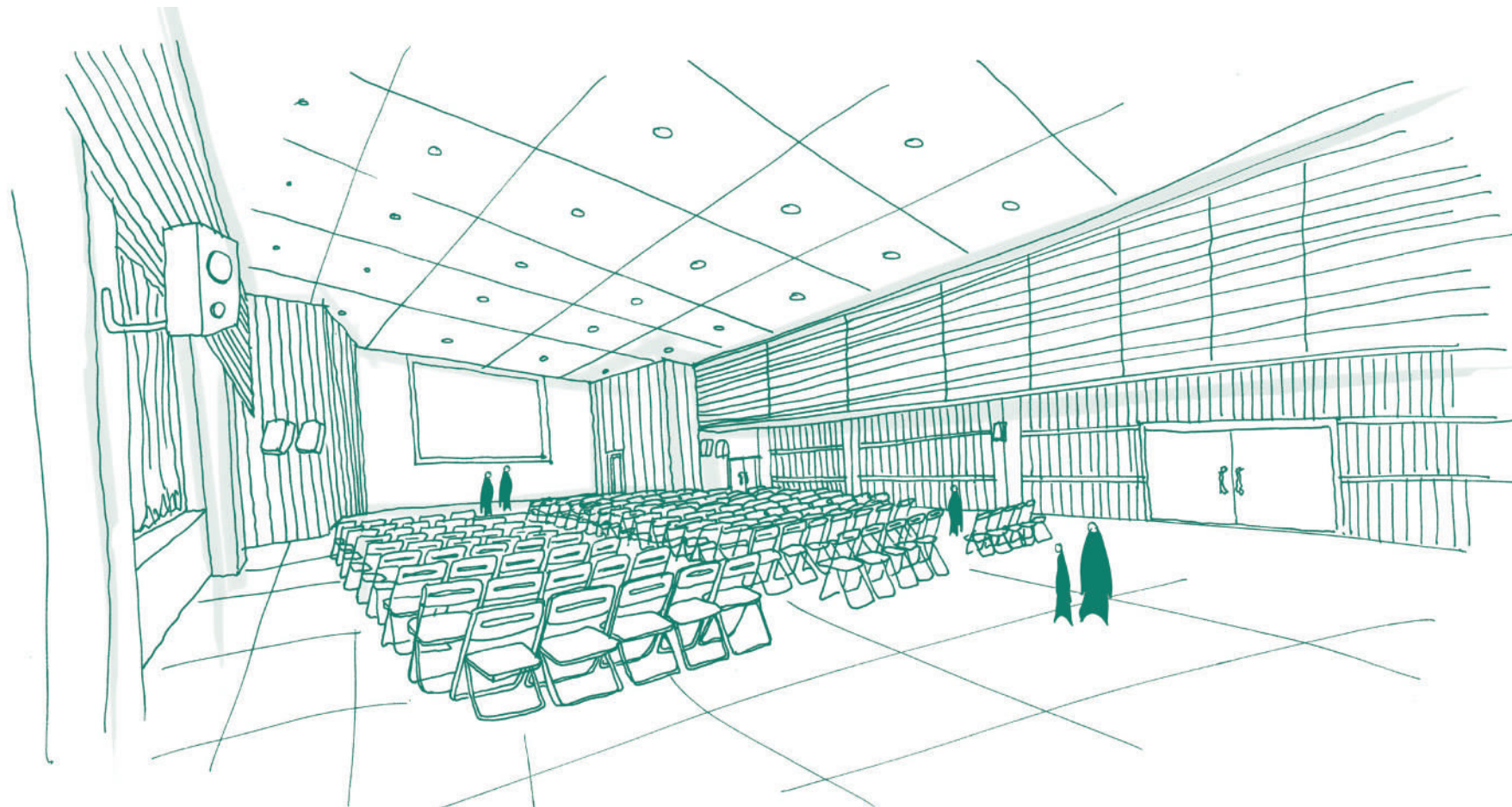
# 06 AFoCO RETC Facility Details

## 01 Education and Training Zone

This zone is composed of lecture rooms, laboratories, meeting rooms, administrative offices, conference hall, dining hall and exhibition hall. The conference hall in capacity to hold 200 people is equipped with the stage equipment and the most advanced audio and video systems enough for large scaled events. There are 3 lecture rooms and 2 laboratories to be used for theoretical lessons and relevant practices, each of which can accommodate 30 people. Each of two meeting rooms can accommodate 20 people and provide facilities necessary for small scaled group discussion as well as formal meetings. Dining hall provides high quality menus prepared with fresh ingredients with resting area for a brief breaks for trainees.



1 Head office 2 Administrative office 3 Hallway





1,2 Lecture room 3 Meeting room  
4 Conference hall 5 Dining hall  
6 Dining hall terrace(deck)





1



2



4

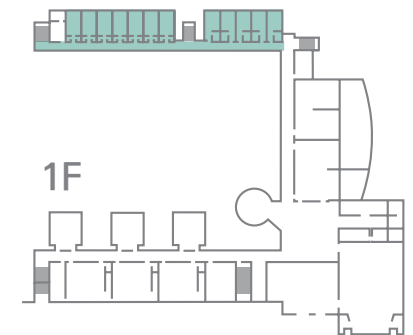
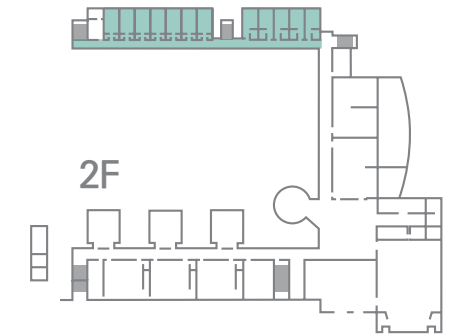
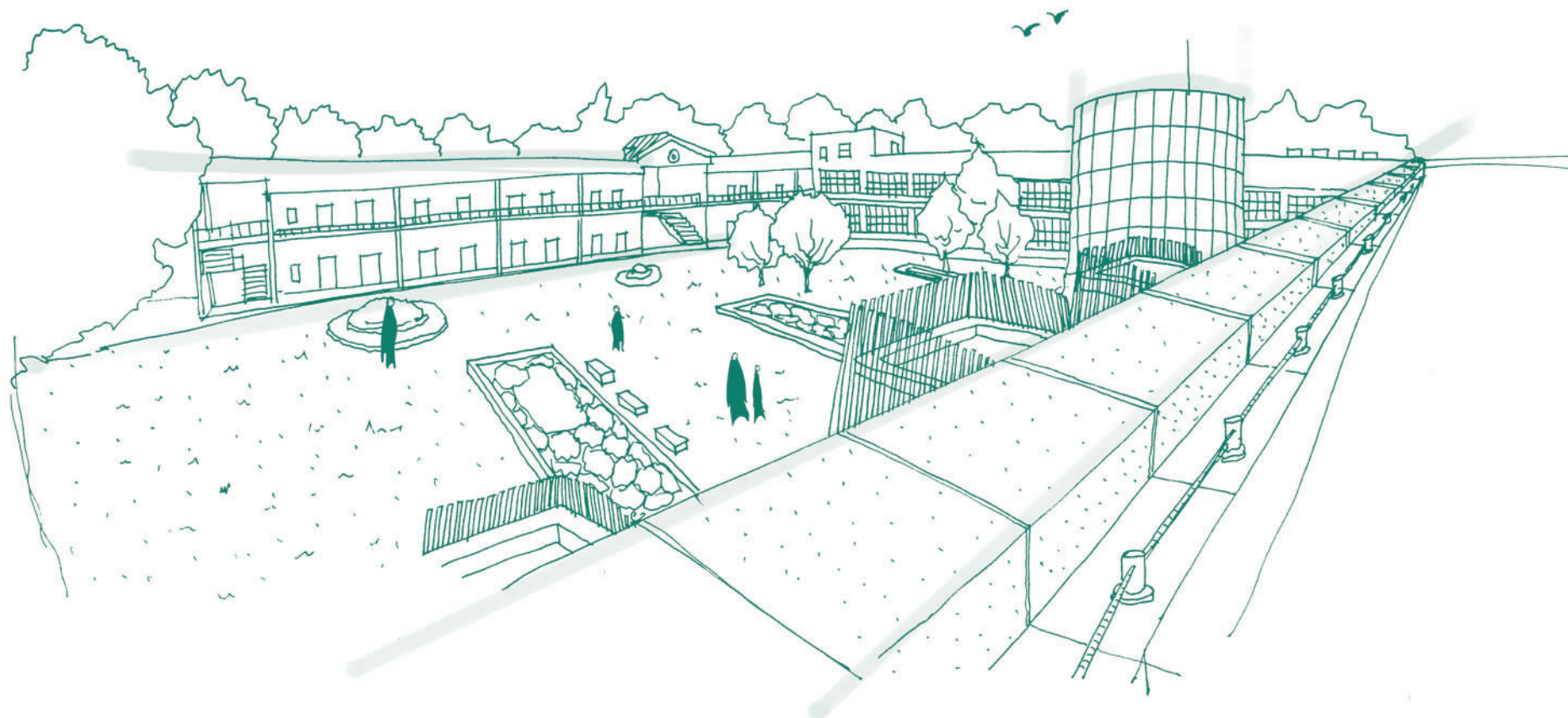
1 Exhibition lobby 2,3,4 Interior of Exhibition lobby

## 02 Accommodation Zone

The space is composed of lecturers' residence dormitory and trainees' dormitory for lodging and resting during the training period. The dormitories may hold 38 people at the same time and equipped with safelight TV, private rest rooms and washing areas to guarantee comfortable resting for everyone using the facility. For the safety measure for trainees, an automated external defibrillator and first aid kits are prepared along with the rapid patient transportation system to a general hospital in the Yangon city.



1 Dormitory exterior 2 Dormitory interior 3 Dormitory restroom





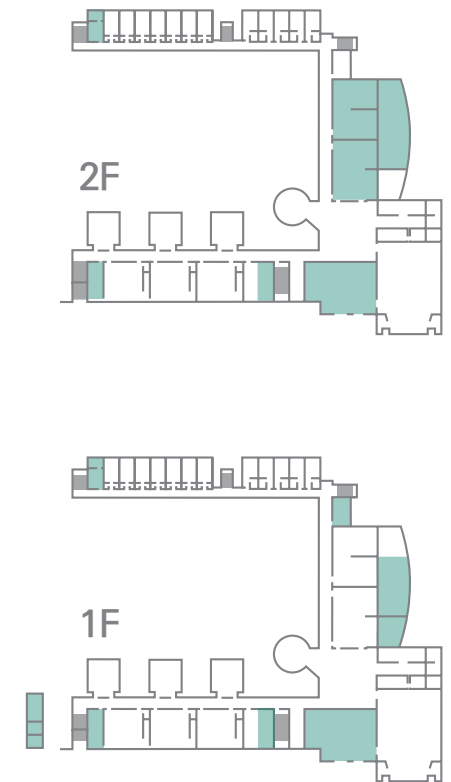
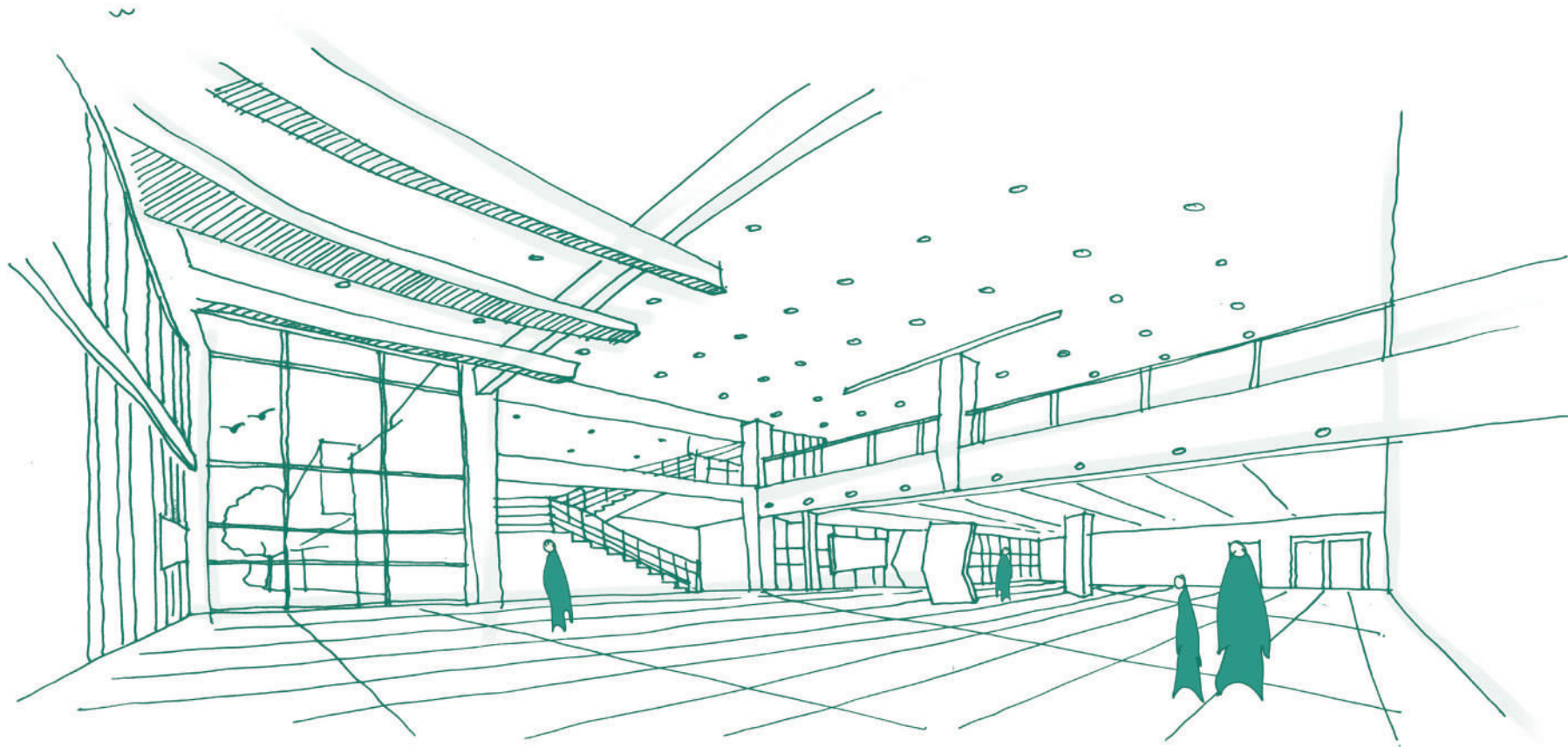
1 Dormitory hallway 2 Dormitory stairs 3,4 Interior of Dormitory room

### 03 Common and Support Zone

Common spaces and convenient facilities including lobby, terrace, resting lounge, fitness room, laundry room and restroom are located in adequate spots in the building for convenience. Also, the maintenance area is composed of the security office, the power generator and transformer room, the gas storage, the water tank and the pump room to manage the electricity and machinery functions. The security office runs for 24 hours to maintain the safety and security of the center. The power transformer and generator are to supply the stable electricity even during a power down incident. The deep well in depth of 180m has been developed and is used as a water source for drinking and for other purposes of AFoCO training center.



1 Community hall 2 Fitness room 3 Fitness room





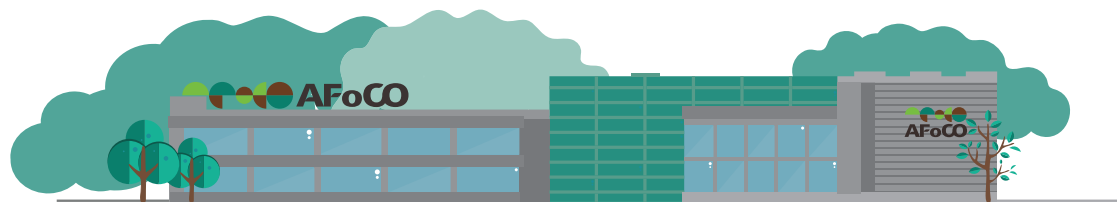
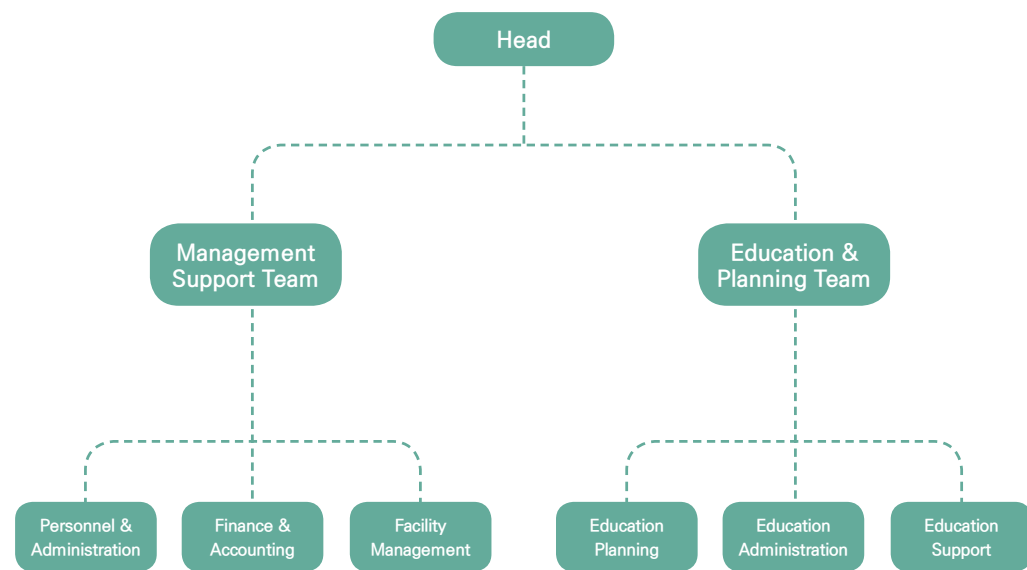
1 Lobby 2,3 Panoramic view 4 Flower garden



5 Entrance 6 Security office 7 Electrical room 8 Laundry room

# 07 AFoCO RETC Organization

The AFoCO RETC is composed of the head, management support team and education & planning team. The head is responsible for the general center operation. The management support team handles human resource management, budget-related matters and facilities management while the education & planning team handles the planning and operation of training programs. The staff are officials from the Forest Department of Myanmar and staff from the AFoCO Secretariat.



Title	Main Tasks	
Center Head	In charge of the overall management of the RETC	
Team Leader	In charge of the Management Support Team	
Personnel Administration Staff	Manage staff attendance, leaves and business trips	
	Manage staff benefits	
	Position Training for Employee	
	Manage salary, allowance and insurance for staff	
	Recruit staff for the RETC operation	
	In charge of safety management	
	Conduct bids and negotiate contracts for the RETC operation	
	Procure and examine goods for the RETC operation	
	Manage RETC assets and equipment	
	Manage documents of the Management Support Team	
	Carry out external cooperation work (facility use and rental service)	
	Manage events and public relations	
	Take care of domestic affairs and public communication	
	Manage the allocation of vehicles	
Finance & Accounting Staff	Allocate and manage the budget for the RETC operation (bookkeeping, accounting and settlements)	
	Manage statistical data for the RETC operation	
Facility Management Staff	Manage facilities and equipment	
	· Electricity, machines, communication and lighting system	
	· Other equipment (Images, sound, physical training facilities)	
	· Water transmission and distribution system including the fire safety management	
	· Landscapes and field sites	
	· Facilities and sanitation (including dormitory and canteen)	
	Manage vehicles (vehicle service and maintenance)	
	In charge of building security	
	Team Leader	In charge of the Education & Planning Team
	Education Planning Staff	Develop the strategy for education and training programs
Develop the work and budget plans for education and training programs		
Develop education and training programs		
Develop training modules		
Operate and evaluate education and training programs		
Collect materials for education and training programs		
Manage budgets (bookkeeping, accounting and settlements)		
Conduct staff training programs		
Plan exhibitions and promote the RETC		
Education Administration Staff		Manage participants and alumni for education and training programs
	Arrange professional manpower and external organizations (Establish cooperation network)	
	Manage RETC website	
	Carry out computer-related tasks for the RETC operation	
Education Support Staff	Manage records and documents for education and training programs	
	Supply and manage goods for education and training	
	Support education and training programs	
Education Support Staff	Manage the exhibition hall	

# 08 AFoCO RETC Location

**NAY PYI TAW**  
(367km from AFoCO RETC)

**AFoCO RETC**

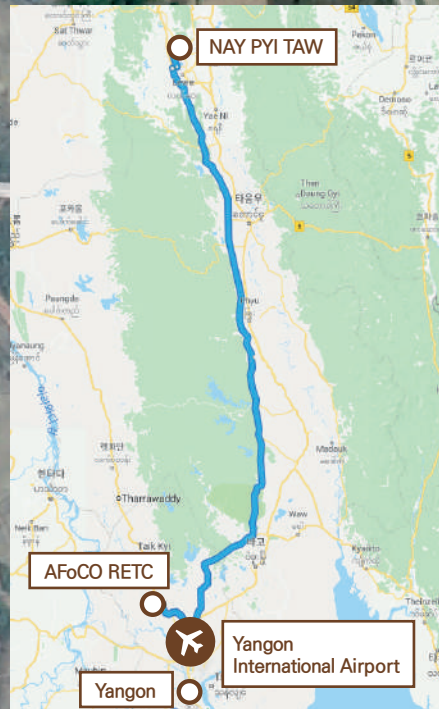
Seed and Seedling Center

CFDTC

Farm Road

Yangon-Pyay Rd.

Hmawbi



**Yangon International Airport**  
(44.1km from AFoCO RETC)

Technological University Hmawbi

# 09

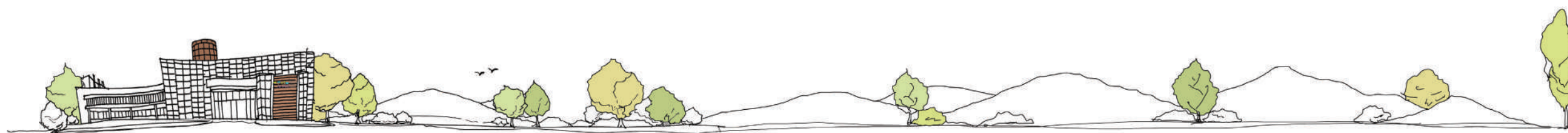
AFoCO RETC  
Partner Institutions

## Related Organizations

- National Institute of Forest Science, NIFoS
- Korea Forestry Promotion Institute, KoFPI
- United Nations Framework Convention on Climate Change, UNFCC
- Association of Southeast Asian Nations, ASEAN
- Green Climate Fund, GCF
- Global Green Growth Institute, GGGI
- Korea International Cooperation Agency, KOICA
- ASEAN–Korea Centre, AKC
- Asia–Pacific Network for Sustainable Forest Management and Rehabilitation, APFNet
- United Nations Convention to Combat Desertification, UNCCD
- United Nations Environment Program, UNEP
- Asian Network of Traditional Forest Knowledge
- Asian Development Bank, ADB
- Global Forest Fire Monitoring Center, GFMC
- ASEAN–Korea Environmental Cooperation Unit, AKECU
- International Tropical Timber Organization, ITTO
- The Center for People and Forests, RECOFTC
- Food and Agriculture Organization, FAO
- Center for International Forestry Research, CIFOR
- International Union of Forestry Research Organization, IUFRO
- Asia Pacific Association of Forestry Research Institutions, APAFRI
- International Union for Conservation of Nature, IUCN
- Convention on Biological Diversity, CBD
- International Institute for Applied Systems Analysis, IIASA

## Cooperating Countries

- Bhutan**  
Department of Forest & Park Services,  
Ministry of Agriculture and Forests  
<http://www.moa.gov.bt/>
- Brunei Darussalam**  
Forest Department,  
Ministry of Primary Resources and Tourism  
<http://www.forestry.gov.bn/>
- Cambodia**  
Forestry Administration,  
Ministry of Agriculture, Forestry, and Fisheries  
<http://www.forestry.gov.kh/>
- Indonesia**  
Forestry and Environment Research Development and Innovation Agency,  
Ministry of Environment and Forestry  
<http://www.menlhk.go.id/>
- Kazakhstan**  
Committee of Forestry and Fauna,  
Ministry of Agriculture  
<http://mgov.kz/en/>
- Laos**  
Department of Forestry,  
Ministry of Agriculture and Forestry  
<http://www.maf.gov.la/>
- Mongolia**  
Department of Forest Policy and Coordination,  
Ministry of Environment and Tourism  
<http://www.mne.mn/>
- Malaysia**  
Ministry of Natural Resources and Environment  
<http://www.nre.gov.my/>
- Myanmar**  
Forest Department,  
Ministry of Natural Resources and Environmental Conservation  
<http://www.monrec.gov.mm/>
- Philippines**  
Forest Management Bureau,  
Department of Environment and Natural Resources  
<http://forestry.denr.gov.ph/>
- Singapore**  
National Parks Board,  
Ministry of National Development  
<https://www.nparks.gov.sg/>
- Thailand**  
Royal Forest Department,  
Ministry of Natural Resources and Environment  
<http://www.forest.go.th/>
- Timor–Leste**  
Ministry of Agriculture and Fisheries  
<http://maf.gov.tl/>
- Viet Nam**  
Viet Nam Administration of Forestry,  
Ministry of Agriculture and Rural Development  
<http://tongcuclamnghep.gov.vn/>
- Republic of Korea**  
Korea Forest Service  
<http://english.forest.go.kr/>



**AFoCO**

Regional Education  
and Training Center

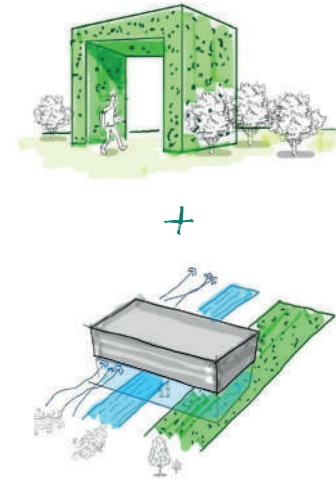
# Establishment Process

Photo Record of AFoCO RETC Establishment



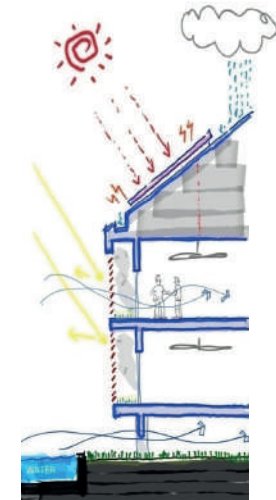


## 01 Green Architecture



INTO FOREST + FOREST INTO

## 02 ECO Friendly Space



SUSTAINABLE + ENERGY SAVING + LOCALIZED

## 03 Symbolized Landscape



+



+



GREEN  
+  
MYANMAR  
+  
AfoCO

## 04 Optimization



THROUGHOUT THE YEAR  
+  
DIVERSE PROGRAM  
+  
COMFORTABLE



In the global perspective, the preservation and development of forestry resources are very critical in handling the impact of climate change and improving the public awareness on the value of natural resources. The AfoCO has designed an ecofriendly building for the Regional Education and Training Center (RETC) in Hmawbi Township, Yangon, Myanmar. The architecture of the AfoCO pursues the green philosophy. The vertical louver glazing located at the south balcony and the green wall system in a regular pattern connected to the main entrance well represents the dynamics and change of the green design philosophy. Also, the renewable energy is applied to the architecture by adopting the solar power system to reduce the center's carbon emission.

The center was established to provide forest-related education and training programs for the capacity building of forestry sector workers in each member country. The center is divided into 1) Education and Training Area, 2) Accommodation Area, and 3) Support Area. Each division is arranged in the form of U-shape with the courtyard as a center, which places each area between the natural spaces to improve the quality of life and the environment. The outdoor space was designed in such a way to preserve and rearrange the existing trees to the maximum extent according to the purpose of AfoCO's establishment.

# 02 AFOCO RETC Establishment Process

- **Signing of MOU**  
Between Korea Forest Service and Forest Department of Myanmar (August, 2014)
- **Opening the Field Office**  
Hmawbi Township, Myanmar, June 2015
- **Completion of the final design**  
July, 2015
- **Commencement of the RETC construction**  
November, 2015

### Construction Process

- **Approval of the construction plan**  
The 3rd Steering Committee Meeting, January 2016
- **Completion of the structural work**  
September, 2016
- **Completion of the finishing work**  
December, 2017

### Infrastructure Construction Process

- **Confirmation of Equipment Procurement Plan** May, 2016
- **Providing total 174 equipment and 1 vehicle from Korea**
- **Assignment of the official from the Forest Department of Myanmar to handle the tax exemption procedures for equipment provision**
- **Completion of entrance road pavement and aggregate work in the construction site for the prevention of the construction safety accident** July, 2016
- **Pavement of the building entrance road, fence installation, medium voltage connection work and landscaping work** January, 2018
- **Completion of the finishing work**
- **Installation of equipment and exhibition hall** January, 2018



## 01 Foundation Work

The foundation work initiating the construction is recognized as the most important phase to secure the stability of sustainable structure of the construction.



## 02 Structure Work

The structure on the strong foundation is the framework for functional space formation and becomes a solid basis for realizing the formativeness of only AFoCO RETC.



### 03 Equipment Installation

Each equipment installed performs its own functions so that both trainers and trainees can stay comfortably.



### 04 Building Entrance

The green wall highlighting the identity of the center was constructed by the accurate calculation and plan to complete the formation from the foundation work phase. The front wall was built with the wood donated by the Myanmar government.



## 05 Landscaping Work

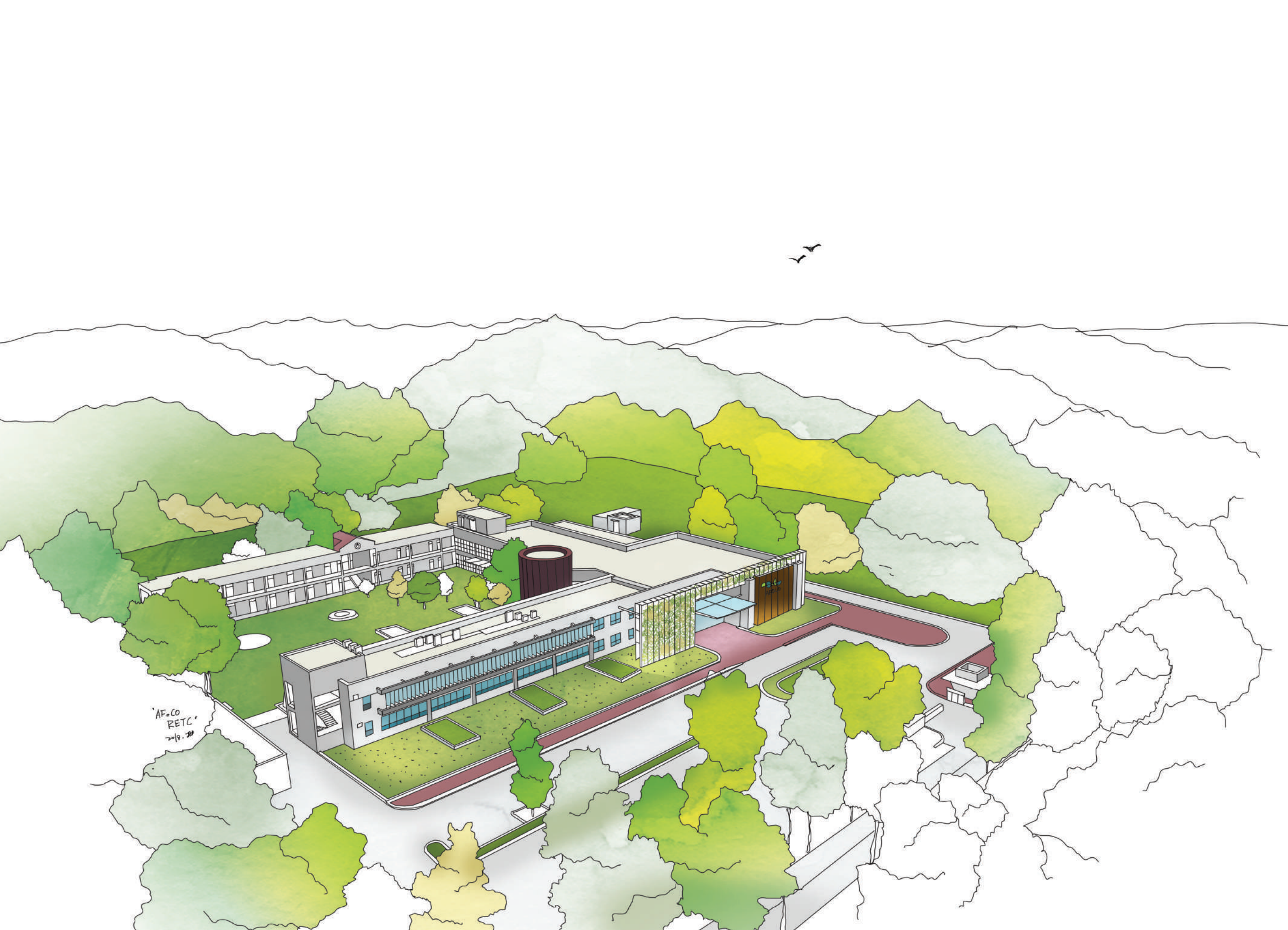
The existing trees in the site were used for the excellent landscaping trees to realize the AFoCO's will for the forest conservation. Flowers representing Myanmar were also planted.



## 06 Exterior Work

It is convenient to access from the entrance road to the Welcome Plaza, and the national flags of member countries will welcome visitors.





'AF.CO  
RETC'  
2/19.20



---

Publisher | Park Eunsik, Acting Executive Director of the AFoCO Secretariat

Printed in the Republic of Korea

Copyright© AFoCO Secretariat 2018

8th Floor, 9 Gukhoe-daero 62-gil, Yeongdeungpo-gu, Seoul, Republic of Korea 07236

Tel\_+82-2-785-8961 Fax\_+82-2-785-8970

<http://www.afocosec.org/>

Design | Designhunters

<http://www.designhunters.co.kr/>